

Mountsorrel // Glensanda



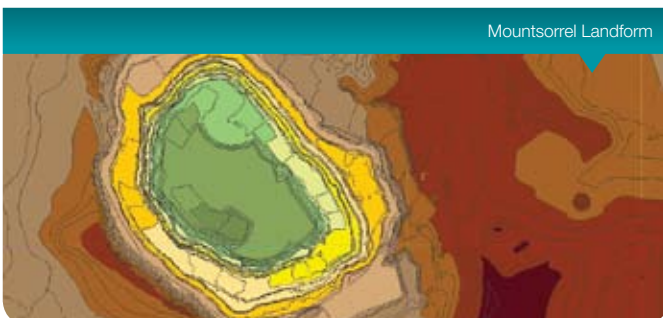
As Urban Designers, Development Planners, Minerals/Waste Planners and Landscape Architects, a large proportion of David Jarvis Associates' projects involve the generation of 3D models. These are used as a basis for strategic planning and environment assessments. emapsite continues to provide us with a range of data that enables us to create 3D landscape models and also prepare supporting documents and plans; this includes Landform PROFILE, NextMap, Aerial Photography, OS MasterMap and OS Raster data. The following case studies included landform models that were used for visual impact analysis and photomontages.

Mountsorrel

Mountsorrel Quarry is the largest output hard rock quarry in Europe. The quarry complex extends over an area of approximately two square kilometres. Since 1990 David Jarvis Associates Ltd has secured numerous planning permissions on behalf of Lafarge Aggregates Limited for the quarry and associated production facilities. The most important of these related to a major extension of the quarry which involved the disposal of over 3 million cubic metres of spoil used to create new landforms, as well as the restoration of an old quarry and landfill site. LSS modelling has been used extensively to assist development of the various scheme designs in terms of volumetric calculations and visualisation. Given its size, the quarry remains well screened and the new landforms are developing significant nature conservation value.

Glensanda

David Jarvis Associates Ltd prepared a landscape and visual assessment as part of an EIA for works at a granite super quarry at Glensanda, North West Scotland. The assessment looked at the likely impacts of extending the quarry operations, additional proposals at the loch side works and further restoration. The quarry is situated high in the Morvern area of the Highlands, close to Loch Linnhe. There are opportunities for long distance views to the site due to the high altitude and location of the quarry next to the Loch; the study area covered 644 square kilometres. To test such a large study area, the company created 3D models of the site at different stages within the surrounding landform. From this we were able to test the proposals with line of sight and zone of visual influence studies and to create photomontage views from specific locations.



“ We continue to be a regular customer of emapsite because they provide an efficient and prompt service. Their online data ordering and management system is excellent and makes the whole process of purchasing digital data quick and easy. ”

Lisa Tolchard
Landscape Architect, David Jarvis Associates



Peters Village // Heathland Restoration Project

Peters Village

Peters Village is a proposed new settlement located within a disused chalk quarry and along a derelict and run down riverside frontage to the River Medway in Kent. Proposed development includes the construction of a new bridge crossing the River. The site adjoins an Area of Outstanding Natural Beauty and Sites of Special Scientific Interest.

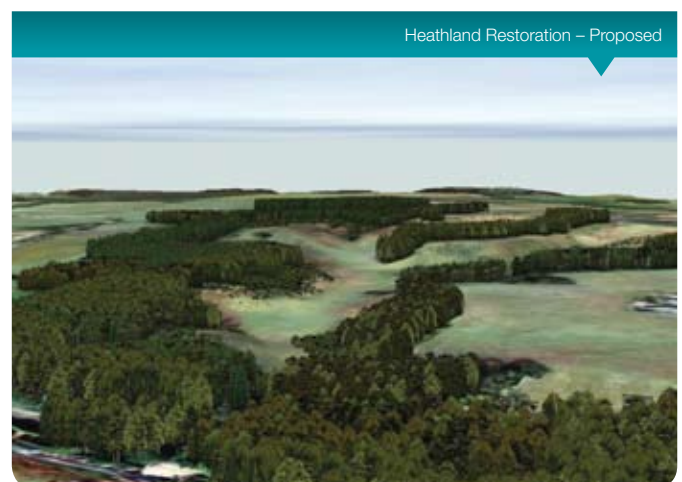
David Jarvis Associates Ltd was commissioned by Trenport Investments Ltd to prepare a landscape strategy for the restoration and development of the site and to carry out a landscape and visual assessment. The work involved extensive use of LSS based visualisation modelling. The scheme now has the benefit of planning permission and site works will commence during 2007.



Heathland Restoration Project

The use of LSS modelling for quarry design phased volumetric and visualisation studies and presentation is illustrated by David Jarvis Associates Ltd's work on this specialist sand quarry.

The restoration requirement was to provide a naturalistic landform suitable for local leisure and amenity whilst delivering a substantive improvement in biodiversity.



www.emapsite.com



0118 973 6883



info@emapsite.com

