

Marine Mapping - data for the deep,
solutions for your needs.

EMAPSITE™

Location data clarity



We work with national hydrographic offices and other key agencies to offer you the widest range of authoritative marine data. Accurate, up-to-date, and delivered the way you need it: this is everything you need in a comprehensive marine data package, with the support of experts to guarantee you'll be getting the most value from the information you're using...

- > Get instant access to raster charts, plus data on tides and tidal currents, geology, shipwrecks, elevation, transport and more.
- > Use our online services that support organisations with or without GIS.
- > Make the most of our flexible web delivery (WMS/WFS), get data in the GIS format you prefer.
- > Buy just the data you need – there are no hidden costs, no unnecessary area downloads.
- > Access the Seabed Digital Elevation Model (available as 1 or 6 arc seconds).
- > Ask us about bespoke products that incorporate your own (or other suppliers') data.

Ports & Harbours | Renewable Energy | Offshore Minerals | Fisheries & Aquaculture | Telecoms | Disaster Mitigation & Response | Defence & Civil Security



www.emapsite.com



0118 973 6883



info@emapsite.com

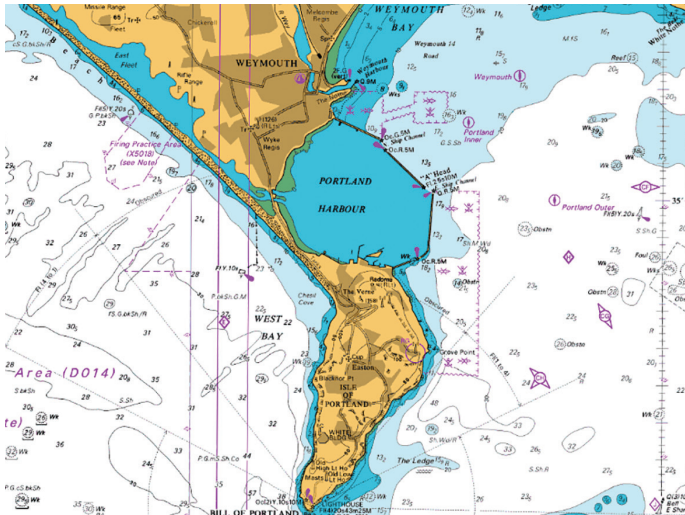
© Crown Copyright 2018. All rights reserved. emapsite, Cody Technology Park, Farnborough GU14 0LX



Flexible marine mapping solutions, tailored for your needs

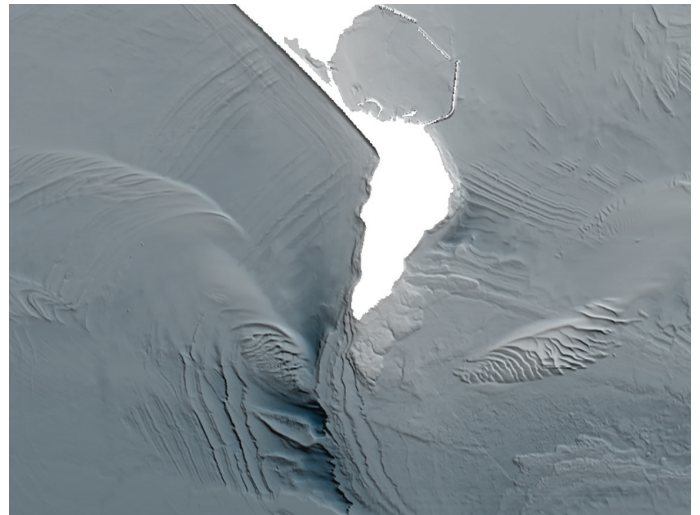
Marine Raster Charts

Familiar nautical chart base map, low cost and ready for immediate use in GIS. Included in the range are small scale charts of seas and regions up to very large scale charts of harbours and ports.



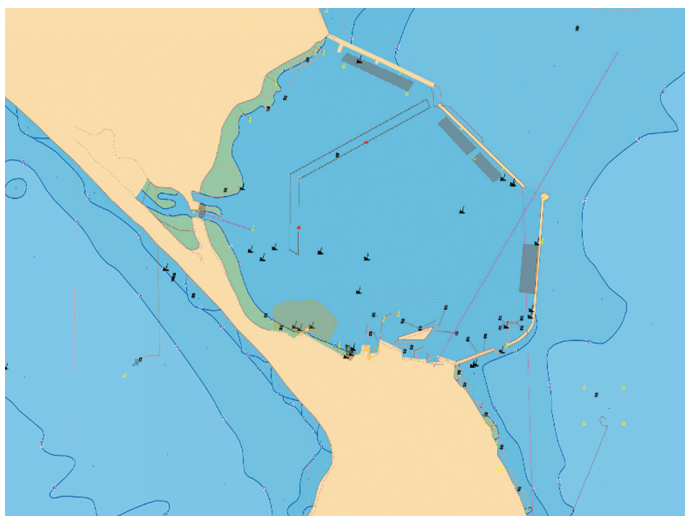
Marine Themes - Gridded Sea Bed DEM

A sea bed digital elevation model (DEM) at 1 and 6 arc seconds utilising single and multi-beam hydrographic survey data from the UK Hydrographic Office and other agencies. Data derived from Electronic Navigational Charts (ENCs) is used to provide additional coverage.



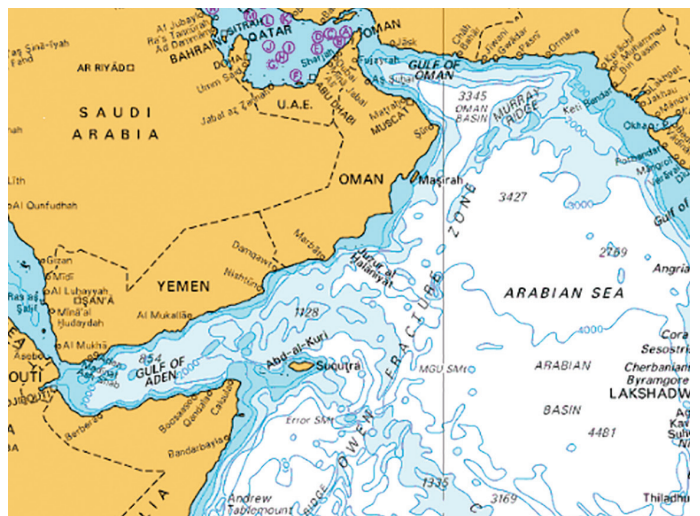
Marine Themes Vector Data

Marine Themes comprises authoritative data from the UK and other Hydrographic Offices, engineered into logical data layers for easy loading and efficient use in GIS. Layers include Elevation, Shipwrecks and Obstructions, Transport, Industrial Facilities Administrative & Management Units, Geographical Regions.



Global Marine Mapping

Marine raster charts at a variety of scales, complete coverage of the world's oceans. UKHO charts are available for selected regions worldwide depending on international agreements. In the absence of UKHO data, other sources from the US and Russia can provide marine chart data in raster format. The US data is published by the National Geospatial Intelligence Agency between 1978-2001, and includes small scale charts of seas and regions up to very large scale charts of harbours and ports.



For more information please visit www.emapsite.com/applications/marine