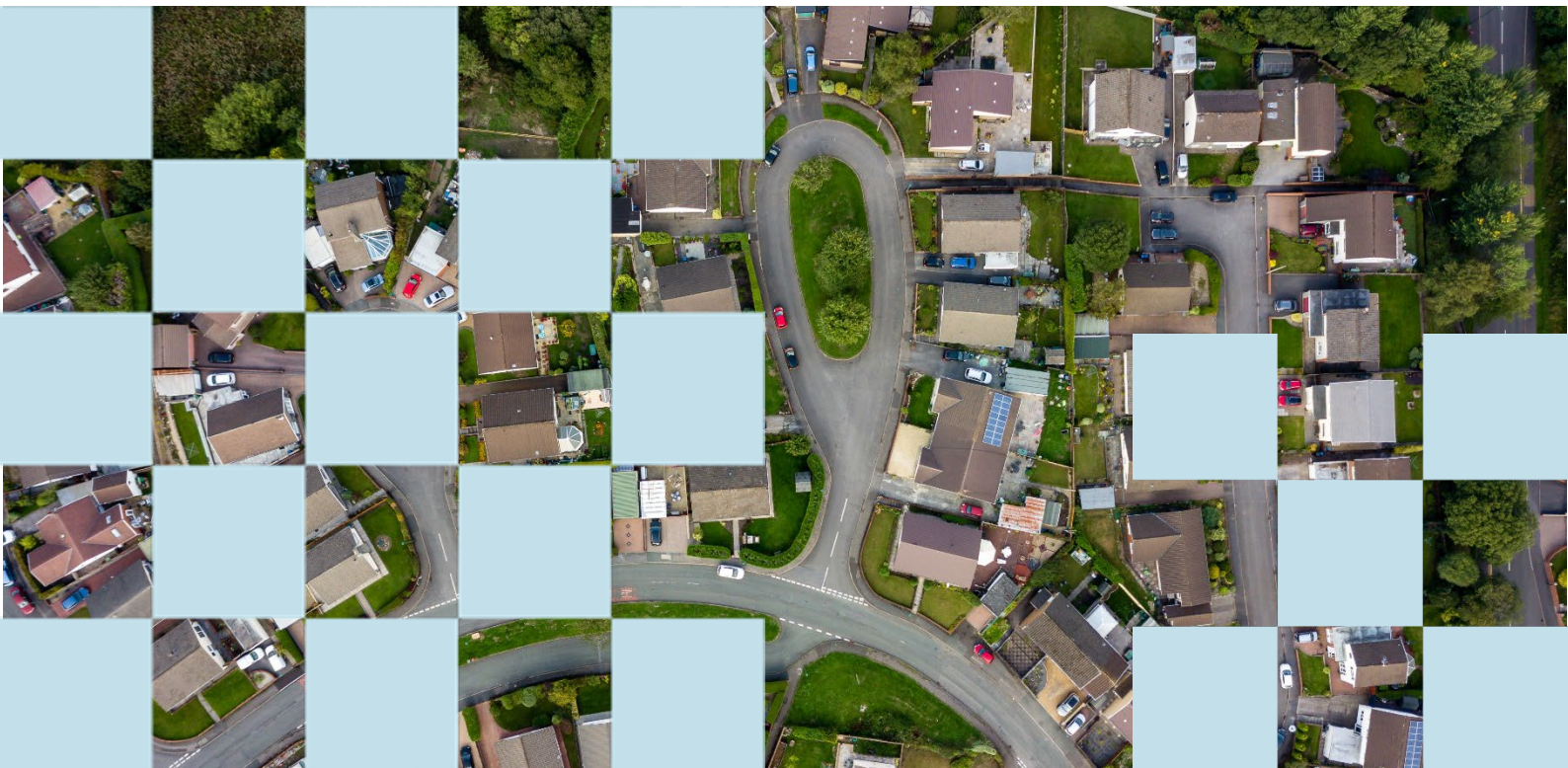




Field Dictionary

Idox Local Plans

18Feb25



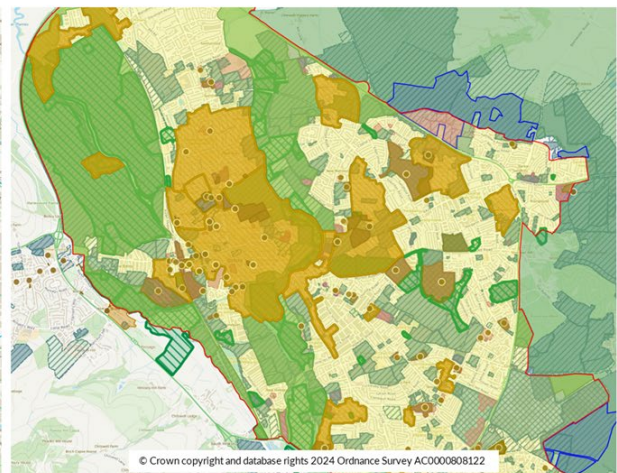
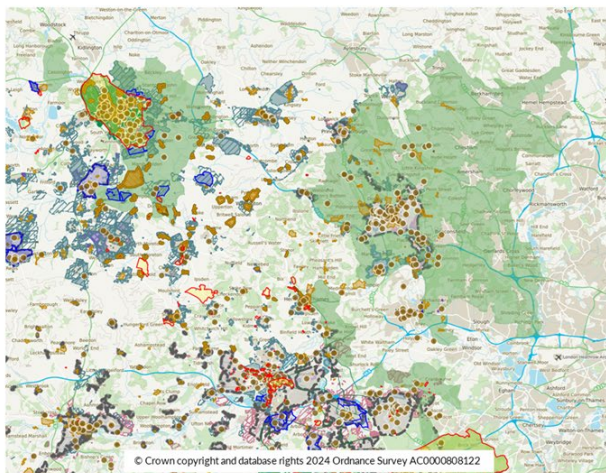
Idox Local Plans Field Dictionary

Introduction

The Idox *Local Plans* dataset provides data for adopted and emerging Local Development Plans (LDP) and Strategic Housing Land Availability Assessments (SHLAA) in Great Britain. The data is collected from Local Authorities and is intended for housing/land developers who undertake search and analytics activities to identify land development opportunities. It is available as a data download in GPKG format with supporting style files (QML and SLD).

Idox Local Plans provides attributes for the following set of layers which are described in the field dictionary below:

- Article 4 Direction (Adopted/Emerging)
- Brownfield Land (Points/Sites) - England
- Candidate Site Allocations - Wales
- Conservation Areas (Adopted/Emerging)
- Core Paths (Adopted) - Scotland
- Development Areas (Adopted/Emerging)
- ELA (Employment Land Audit) and HLA (Housing Land Audit) - Scotland
- Greenbelt (Adopted/Emerging)
- Green Corridor (Adopted/Emerging)
- Settlement area (Adopted/Emerging)
- SHLAA (Adopted/Emerging)
- Site allocations (Adopted/Emerging)
- Vacant and Derelict Land (Points/Sites) - Scotland



Data Quality

This dataset has been compiled from publicly available open data sources. While every effort has been made to ensure accuracy, users should note the following considerations;

Source Reliability

Data is captured from the open data sources available from each Local Planning Authority. These sources vary in format, accuracy, content and currency.

Currency and Completeness

Each Local Planning Authority publishes information to different timescales and different levels of detail. While we endeavour to capture the most recent open data available, we cannot guarantee currency and completeness.

Consistency

While we have established processes to help standardise the data captured, it may not always be present or entirely consistent. Reference should be made to the original sources for verification.

Standards

In the absence of a formal Standard, processes have been created to present data uniformly. Despite this, data may not always be present or consistent.

Errors

We cannot guarantee that the dataset is free from errors or that it is fit for your purpose or use. We have an ongoing programme of data quality improvement and welcome feedback or error reporting to assist us in the continuous improvement of the product.

Attribution and Licensing

This data is licensed for internal business use (i.e. the internal administration of a licensee's business) and for inclusion in reports prepared by licensees for their clients. Data may not be onward distributed to third parties without the express permission of Idox Geospatial Division. The following attribution statement should appear in a conspicuous position wherever the data is used: *@Idox Geospatial Division 2024-2025*

Disclaimer

This dataset is provided without any guarantees or warranties regarding accuracy, completeness or fitness for a particular purpose. We recommend that the dataset is trialled prior to licence purchase to ensure it is suitable for the intended use case(s).

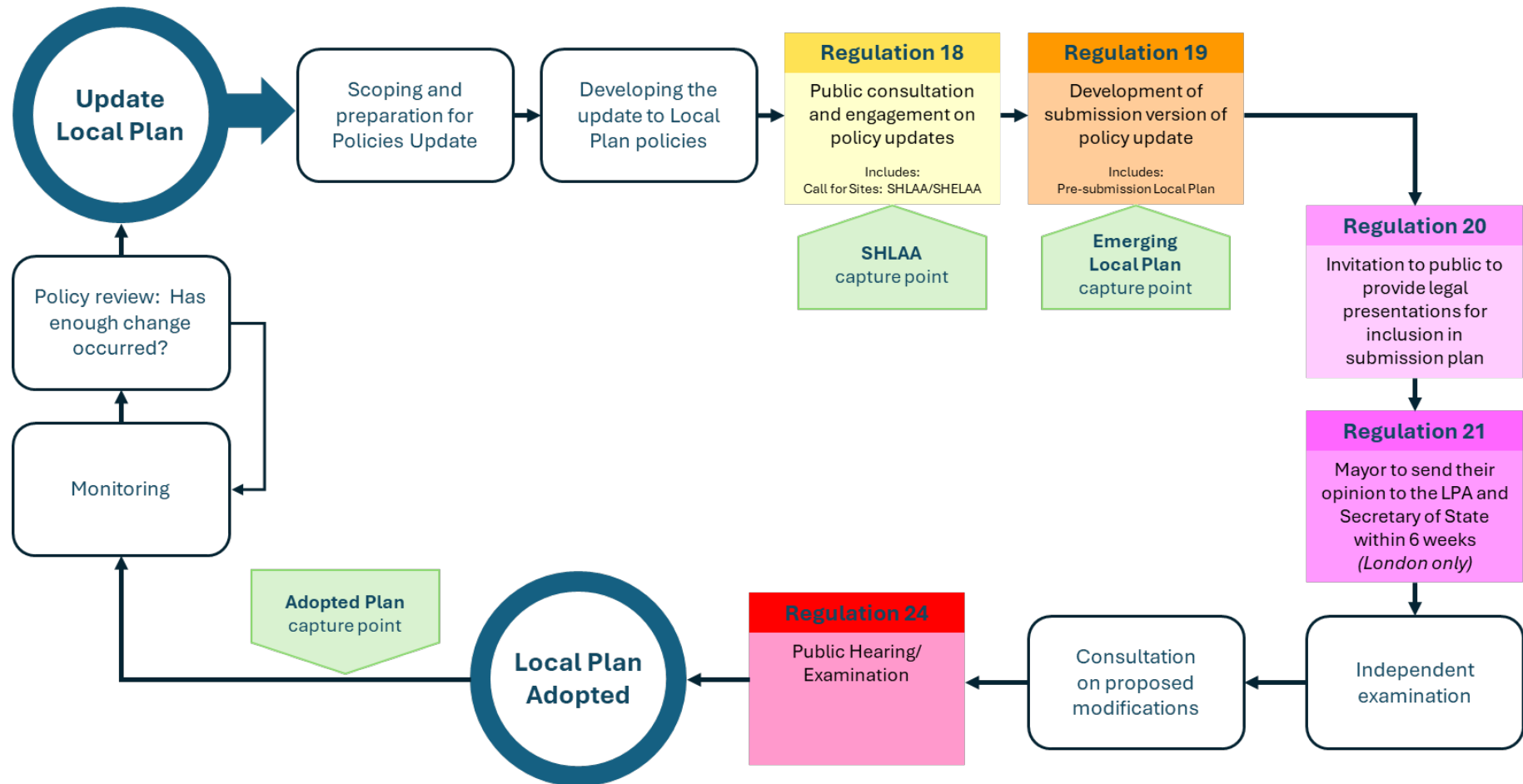
Capture Standard

The 'capture_standard' attribute included in the data dictionary reflects a ranking from 1 to 5 (1=best) having the following guidance:

1. Data collected as digital data from creator/source.
2. Data digitised from georeferenced image with extremely high accuracy and image resolution better than 0.1m.
3. Data digitised from georeferenced image with good accuracy and image resolution better than 1m.
4. Data digitised from georeferenced image and image resolution less than 1m.
5. Data doesn't satisfy any of the other categories.

Data Capture Points

Local Government Associations defined workflow for Local Plans



Idox Local Plans Field Dictionary

Article 4 Direction (Adopted & Emerging)

Field	Description	Type	Length
name	The name or site reference number as given by the authority.	text	
restriction	The permitted development allowed by the restriction.	text	
description	Further information where it is provided by the authority.	text	
unique_id	Unique ID key which provides a unique number across all data rows.	int8	
plan_id	Identifier unique for each local authority plan captured.	varchar	34
plan_name	Name of the local plan at time of capture.	varchar	114
plan_url	A URL link to the local plan at time of capture.	varchar	
lpa_name	The local planning authority name as defined in the Office for National Statistics (ONS) open geography portal.	varchar	35
lpa_code	The local planning authority GSS code as defined in the Office for National Statistics (ONS) open geography portal.	varchar	9
lad_name	The local authority district name as defined in the Office for National Statistics (ONS) open geography portal.	varchar	35
lad_code	The local authority district GSS code as defined in the Office for National Statistics (ONS) open geography portal.	varchar	9
multistage_plan	Indicates whether the local plan consists of multiple plans released over several stages until complete.	boolean	
mhclg_planid	Unique ID provided by Ministry of Housing, Communities and Local Government (MHCLG) for the local authority (extracted from MHCLG local plan spreadsheet).	varchar	36
mhclg_authority_name	The name of the authority used by the Ministry of Housing, Communities and Local Government in the local plan status spreadsheet.	text	

Field	Description	Type	Length
mhclg_code	The Office for National Statistics (ONS) GSS code for the boundary used by the Ministry of Housing, Communities & Local Government	text	
mhclg_start_year	Provides the year in which the formal process of developing the local plan begins (Extracted from the MHCLG local plan spreadsheet).	Int2	
mhclg_end_year	Provides the intended timeframe for the plan's application, although it may be reviewed or updated before the end date (Extracted from the MHCLG local plan spreadsheet).	Int2	
mhclg_adopted_date	Provides the date when the plan was formally adopted by the authority (Extracted from the MHCLG local plan spreadsheet).	Date	
capture_standard	A ranking from 1 to 5 indicating the data quality at time of capture.	int4	
Geom	Geometry of the feature in OSGB36 British National Grid (EPSG 27700) with no Z component.	Geometry.27700	

Brownfield Points & Sites – England

Field	Description	Type	Size
name	The name or site reference number as given by the authority.	text	
ownership	Provides details of the ownership of the site, where known, commonly based on the Council's information which is primarily evidence gathered as part of the SHLAA process.	text	
planning_status	This gives the status in the development management process, at time of capture, for the brownfield site or point.	text	
permission_type	This gives the type of planning permission, at time of capture, for the brownfield site or point.	text	
permission_date	Provides the date on which permission was granted.	date	
min_net_dwellings	Where sites already have planning consent (full permission or outline permission with reserved matters) this is the number of dwellings permitted. For sites not yet with planning permission (or outline permissions yet to gain reserved matters approval), this minimum capacity of the site is assumed to be -10% below the indicative capacity of the site identified in the latest assessment through the SHLAA process (usually based on either the Council's established methodology for calculating yield for the net developable area of the site or is otherwise informed directly by the development management process).	int8	
site_plan_url	A URL link to further information about the site, where possible this will be the site plan.	text	
unique_id	Unique ID key which provides a unique number across all data rows.	text	
mhclg_authority_name	The name of the authority used by the Ministry of Housing, Communities and Local Government in the local plan status spreadsheet.	text	
mhclg_code	The Office for National Statistics (ONS) GSS code for the boundary used by the Ministry of Housing, Communities & Local Government	text	
capture_standard	A ranking from 1 to 5 indicating the data quality at time of capture.	int4	

Field	Description	Type	Size
Geom	Geometry of the feature in OSGB36 British National Grid (EPSG 27700) with no Z component.	Geometry.27700	

Candidate Sites (Adopted & Emerging) – Wales

Field	Description	Type	Size
site_reference	The name of the site or reference code for the site which is provided by the authority.	text	
subtype	Provides the preferred use type as provided by the authority.	text	
area_m2	Area available for development [Note: this may be significantly smaller than the site area due to an Authority's perception of the buildable area].	Float8	
site_type	Where available, provides whether the site is vacant, greenfield or brownfield.	text	
overall_assessment	The authority's opinion of the site.	text	
reason_for_rejection	Populated where a site is not taken through to the site allocation stage.	text	
unique_id	Unique ID key which provides a unique number across all data rows.	int8	
plan_id	Identifier unique to each local authority plan captured.	varchar	34
plan_name	Name of the local plan at time of capture.	varchar	114
plan_url	A URL link to the local plan at time of capture.	varchar	
lpa_name	The local planning authority name as defined in the Office for National Statistics (ONS) open geography portal.	varchar	35
lpa_code	The local planning authority GSS code as defined in the Office for National Statistics (ONS) open geography portal.	varchar	9
lad_name	The local authority district name as defined in the Office for National Statistics (ONS) open geography portal.	varchar	35
lad_code	The local authority district GSS code as defined in the Office for National Statistics (ONS) open geography portal.	varchar	9
multistage_plan	Indicates whether the local plan consists of multiple plans released over several stages until complete.	boolean	
mhclg_planid	Unique ID provided by Ministry of Housing, Communities and Local Government for the local authority (extracted from MHCLG local plan spreadsheet).	varchar	36

Field	Description	Type	Size
mhclg_authority_name	The name of the authority used by the Ministry of Housing, Communities and Local Government in the local plan status spreadsheet.	text	
mhclg_code	The Office for National Statistics (ONS) GSS code for the boundary used by the Ministry of Housing, Communities & Local Government	text	
mhclg_start_year	Provides the year in which the formal process of developing the local plan begins (Extracted from the MHCLG local plan spreadsheet).	Int2	
mhclg_end_year	Provides the intended timeframe for the plan's application, although it may be reviewed or updated before the end date (Extracted from the MHCLG local plan spreadsheet).	Int2	
mhclg_adopted_date	Provides the date when the plan was formally adopted by the authority (Extracted from the MHCLG local plan spreadsheet).	date	
capture_standard	A ranking from 1 to 5 indicating the data quality at time of capture.	int4	
Geom	Geometry of the feature in OSGB36 British National Grid (EPSG 27700) with no Z component.	Geometry.27700	

Conservation Area (Adopted & Emerging)

Field	Description	Type	Size
name	The name or site reference number as given by the authority.	varchar	114
unique_id	Unique ID key which provides a unique number across all data rows.	int8	
plan_id	Identifier unique to each local authority plan captured.	varchar	34
plan_name	Name of the local plan at time of capture.	varchar	114
plan_url	A URL link to the local plan at time of capture.	varchar	
lpa_name	The local planning authority name as defined in the Office for National Statistics (ONS) open geography portal.	varchar	35
lpa_code	The local planning authority GSS code as defined in the Office for National Statistics (ONS) open geography portal.	varchar	9
lad_name	The local authority district name as defined in the Office for National Statistics (ONS) open geography portal.	varchar	35
lad_code	The local authority district GSS code as defined in the Office for National Statistics (ONS) open geography portal.	varchar	9
multistage_plan	Indicates whether the local plan consists of multiple plans released over several stages until complete.	boolean	
mhclg_planid	Unique ID provided by Ministry of Housing, Communities and Local Government for the local authority (extracted from MHCLG local plan spreadsheet).	varchar	36
mhclg_authority_name	The name of the authority used by the Ministry of Housing, Communities and Local Government in the local plan status spreadsheet.	text	
mhclg_code	The Office for National Statistics (ONS) GSS code for the boundary used by the Ministry of Housing, Communities & Local Government	text	
mhclg_start_year	Provides the year in which the formal process of developing the local plan begins (Extracted from the MHCLG local plan spreadsheet).	Int2	

Field	Description	Type	Size
mhclg_end_year	Provides the intended timeframe for the plan's application, although it may be reviewed or updated before the end date (Extracted from the MHCLG local plan spreadsheet).	Int2	
mhclg_adopted_date	Provides the date when the plan was formally adopted by the authority (Extracted from the MHCLG local plan spreadsheet).	date	
capture_standard	A ranking from 1 to 5 indicating the data quality at time of capture.	int4	
Geom	Geometry of the feature in OSGB36 British National Grid (EPSG 27700) with no Z component.	Geometry.27700	

Core Paths (Adopted) – Scotland

Field	Description	Type	Size
name	The name or site reference number as given by the authority.	varchar	114
site_reference	The name of the site or reference code for the site which is provided by the authority.	text	
unique_id	Unique ID key which provides a unique number across all data rows.	int8	
plan_id	Identifier unique to each local authority plan captured.	varchar	34
plan_name	Name of the local plan at time of capture.	varchar	114
plan_url	A URL link to the local plan at time of capture.	varchar	
lpa_name	The local planning authority name as defined in the Office for National Statistics (ONS) open geography portal.	varchar	35
lpa_code	The local planning authority GSS code as defined in the Office for National Statistics (ONS) open geography portal.	varchar	9
lad_name	The local authority district name as defined in the Office for National Statistics (ONS) open geography portal.	varchar	35
lad_code	The local authority district GSS code as defined in the Office for National Statistics (ONS) open geography portal.	varchar	9
multistage_plan	Indicates whether the local plan consists of multiple plans released over several stages until complete.	Boolean	
mhclg_planid	Unique ID provided by Ministry of Housing, Communities and Local Government for the local authority (extracted from MHCLG local plan spreadsheet).	varchar	36
mhclg_authority_name	The name of the authority used by the Ministry of Housing, Communities and Local Government in the local plan status spreadsheet.	text	
mhclg_code	The Office for National Statistics (ONS) GSS code for the boundary used by the Ministry of Housing, Communities & Local Government	text	
mhclg_start_year	Provides the year in which the formal process of developing the local plan begins (Extracted from the MHCLG local plan spreadsheet).	Int2	

Field	Description	Type	Size
mhcldg_end_year	Provides the intended timeframe for the plan's application, although it may be reviewed or updated before the end date (Extracted from the MHCLG local plan spreadsheet).	Int2	
mhcldg_adopted_date	Provides the date when the plan was formally adopted by the authority (Extracted from the MHCLG local plan spreadsheet).	date	
capture_standard	A ranking from 1 to 5 indicating the data quality at time of capture.	int4	
Geom	Geometry of the feature in OSGB36 British National Grid (EPSG 27700) with no Z component.	Geometry.27700	

Development Area (Adopted & Emerging)

Field	Description	Type	Size
site_reference	The name of the site or reference code for the site which is provided by the authority.	text	
description	Information which has been recorded during the capture that may be of relevance.	text	
unique_id	Unique ID key which provides a unique number across all data rows.	int8	
plan_id	Identifier unique to each local authority plan captured.	varchar	34
plan_name	Name of the local plan at time of capture.	varchar	114
plan_url	A URL link to the local plan at time of capture.	varchar	
lpa_name	The local planning authority name as defined in the Office for National Statistics (ONS) open geography portal.	varchar	35
lpa_code	The local planning authority GSS code as defined in the Office for National Statistics (ONS) open geography portal.	varchar	9
lad_name	The local authority district name as defined in the Office for National Statistics (ONS) open geography portal.	varchar	35
lad_code	The local authority district GSS code as defined in the Office for National Statistics (ONS) open geography portal.	varchar	9
multistage_plan	Indicates whether the local plan consists of multiple plans released over several stages until complete.	Boolean	
mhclg_planid	Unique ID provided by Ministry of Housing, Communities and Local Government for the local authority (extracted from MHCLG local plan spreadsheet).	varchar	36
mhclg_authority_name	The name of the authority used by the Ministry of Housing, Communities and Local Government in the local plan status spreadsheet.	text	
mhclg_code	The Office for National Statistics (ONS) GSS code for the boundary used by the Ministry of Housing, Communities & Local Government	text	
mhclg_start_year	Provides the year in which the formal process of developing the local plan begins (Extracted from the MHCLG local plan spreadsheet).	Int2	

Field	Description	Type	Size
mhclg_end_year	Provides the intended timeframe for the plan's application, although it may be reviewed or updated before the end date (Extracted from the MHCLG local plan spreadsheet).	Int2	
mhclg_adopted_date	Provides the date when the plan was formally adopted by the authority (Extracted from the MHCLG local plan spreadsheet).	date	
capture_standard	A ranking from 1 to 5 indicating the data quality at time of capture.	int4	
Geom	Geometry of the feature in OSGB36 British National Grid (EPSG 27700) with no Z component.	Geometry.27700	

Employment Local Audit & Housing Local Audit (Adopted & Emerging) – Scotland

Field	Description	Type	Size
name	The name or site reference number as given by the authority.	text	
site_reference	The name of the site or reference code for the site which is provided by the authority.	text	
type	References whether it is an ELA (Employment) or HLA (Housing).	text	
site_type	Indicates whether the site is 'greenfield' or 'brownfield' in an Authority's records.	text	
residential_units	The potential number of residential units which the authority calculates could be built.	Int4	
employment_floor_area_m2	The potential floor area in square metres available for employment as assumed by the authority.	Float8	
planning_permission	Where available, this provides the planning permission status at time of capture.	text	
year_entered	Year data was entered by the local authority.	Int4	
remaining_units	Available residential units available at time of capture.	Int4	
unique_id	Unique ID key which provides a unique number across all data rows.	int8	
plan_id	Identifier unique to each local authority plan captured.	varchar	34
plan_name	Name of the local plan at time of capture.	varchar	114
plan_url	A URL link to the local plan at time of capture.	varchar	
lpa_name	The local planning authority name as defined in the Office for National Statistics (ONS) open geography portal.	varchar	35
lpa_code	The local planning authority GSS code as defined in the Office for National Statistics (ONS) open geography portal.	varchar	9
lad_name	The local authority district name as defined in the O Office for National Statistics (ONS) NS open geography portal.	varchar	35
lad_code	The local authority district GSS code as defined in the Office for National Statistics (ONS) open geography portal.	varchar	9

Field	Description	Type	Size
multistage_plan	Indicates whether the local plan consists of multiple plans released over several stages until complete.	boolean	
mhclg_planid	Unique ID provided by Ministry of Housing, Communities and Local Government for the local authority (extracted from MHCLG local plan spreadsheet).	varchar	36
mhclg_authority_name	The name of the authority used by the Ministry of Housing, Communities and Local Government in the local plan status spreadsheet.	text	
mhclg_code	The Office for National Statistics (ONS) GSS code for the boundary used by the Ministry of Housing, Communities & Local Government	text	
mhclg_start_year	Provides the year in which the formal process of developing the local plan begins (Extracted from the MHCLG local plan spreadsheet).	Int2	
mhclg_end_year	Provides the intended timeframe for the plan's application, although it may be reviewed or updated before the end date (Extracted from the MHCLG local plan spreadsheet).	Int2	
mhclg_adopted_date	Provides the date when the plan was formally adopted by the authority (Extracted from the MHCLG local plan spreadsheet).	Date	
capture_standard	A ranking from 1 to 5 indicating the data quality at time of capture.	int4	
Geom	Geometry of the feature in OSGB36 British National Grid (EPSG 27700) with no Z component.	Geometry.27700	

Greenbelt (Adopted & Emerging)
Green Corridor (Adopted & Emerging)
Settlement Area (Adopted & Emerging)

Field	Description	Type	Size
name	The name or site reference number as given by the authority.	text	
unique_id	Unique ID key which provides a unique number across all data rows.	int8	
plan_id	Identifier unique to each local authority plan captured.	varchar	34
plan_name	Name of the local plan at time of capture.	varchar	114
plan_url	A URL link to the local plan at time of capture.	varchar	
lpa_name	The local planning authority name as defined in the Office for National Statistics (ONS) open geography portal.	varchar	35
lpa_code	The local planning authority GSS code as defined in the Office for National Statistics (ONS) open geography portal.	varchar	9
lad_name	The local authority district name as defined in the Office for National Statistics (ONS) open geography portal.	varchar	35
lad_code	The local authority district GSS code as defined in the Office for National Statistics (ONS) open geography portal.	varchar	9
multistage_plan	Indicates whether the local plan consists of multiple plans released over several stages until complete.	Boolean	
mhclg_planid	Unique ID provided by Ministry of Housing, Communities and Local Government for the local authority (extracted from MHCLG local plan spreadsheet).	varchar	36
mhclg_authority_name	The name of the authority used by the Ministry of Housing, Communities and Local Government in the local plan status spreadsheet.	text	
mhclg_code	The Office for National Statistics (ONS) GSS code for the boundary used by the Ministry of Housing, Communities & Local Government	text	
mhclg_start_year	Provides the year in which the formal process of developing the local plan begins (Extracted from the MHCLG local plan spreadsheet).	Int2	

Field	Description	Type	Size
mhclg_end_year	Provides the intended timeframe for the plan's application, although it may be reviewed or updated before the end date (Extracted from the MHCLG local plan spreadsheet).	Int2	
mhclg_adopted_date	Provides the date when the plan was formally adopted by the authority (Extracted from the MHCLG local plan spreadsheet).	Date	
capture_standard	A ranking from 1 to 5 indicating the data quality at time of capture.	int4	
Geom	Geometry of the feature in OSGB36 British National Grid (EPSG 27700) with no Z component.	Geometry.27700	

SHLAA (Adopted & Emerging)

Field	Description	Type	Size
site_reference	The name of the site or reference code for the site which is provided by the authority.	text	
subtype	The employment/residential/mixed use type	varchar	
residential_units	The potential number of residential units which the authority calculates could be built	Int8	
employment_floor_area_m2	The potential floor area in square metres available for employment as assumed by the authority.	Float8	
reason_for_rejection	This field is populated where the site is not taken through to the site allocation stage.	text	
unique_id	Unique ID key which provides a unique number across all data rows.	int8	
plan_id	Identifier unique to each local authority plan captured.	varchar	34
plan_name	Name of the local plan at time of capture.	varchar	114
plan_url	A URL link to the local plan at time of capture.	varchar	
lpa_name	The local planning authority name as defined in the Office for National Statistics (ONS) open geography portal.	varchar	35
lpa_code	The local planning authority GSS code as defined in the Office for National Statistics (ONS) open geography portal.	varchar	9
lad_name	The local authority district name as defined in the Office for National Statistics (ONS) open geography portal.	varchar	35
lad_code	The local authority district GSS code as defined in the Office for National Statistics (ONS) open geography portal.	varchar	9
multistage_plan	Indicates whether the local plan consists of multiple plans released over several stages until complete.	Boolean	
mhclg_planid	Unique ID provided by Ministry of Housing, Communities and Local Government for the local authority (extracted from MHCLG local plan spreadsheet).	varchar	36
mhclg_authority_name	The name of the authority used by the Ministry of Housing, Communities and Local Government in the local plan status spreadsheet.	text	

Field	Description	Type	Size
mhclg_code	The Office for National Statistics (ONS) GSS code for the boundary used by the Ministry of Housing, Communities & Local Government	text	
mhclg_start_year	Provides the year in which the formal process of developing the local plan begins (Extracted from the MHCLG local plan spreadsheet).	Int2	
mhclg_end_year	Provides the intended timeframe for the plan's application, although it may be reviewed or updated before the end date (Extracted from the MHCLG local plan spreadsheet).	Int2	
mhclg_adopted_date	Provides the date when the plan was formally adopted by the authority (Extracted from the MHCLG local plan spreadsheet).	Date	
capture_standard	A ranking from 1 to 5 indicating the data quality at time of capture.	int4	
Geom	Geometry of the feature in OSGB36 British National Grid (EPSG 27700) with no Z component.	Geometry.27700	

Site Allocations (Adopted & Emerging)

Field	Description	Type	Size
name	The name or site reference number as given by the authority.	text	
subtype	The type of use (employment/residential/mixed).	varchar	
residential_dwellings	The potential number of residential dwellings (houses) which the authority calculates could be built.	Int4	
employment_floor_area_m2	The potential floor area in square metres available for employment as assumed by the authority.	Float8	
pitches	The number of pitches available on a traveller and gypsy site, note that this is not a "plot" or "yard".	Int4	
unique_id	Unique ID key which provides a unique number across all data rows.	int8	
plan_id	Identifier unique to each local authority plan captured.	varchar	34
plan_name	Name of the local plan at time of capture.	varchar	114
plan_url	A URL link to the local plan at time of capture.	varchar	
lpa_name	The local planning authority name as defined in the Office for National Statistics (ONS) open geography portal.	varchar	35
lpa_code	The local planning authority GSS code as defined in the Office for National Statistics (ONS) open geography portal.	varchar	9
lad_name	The local authority district name as defined in the Office for National Statistics (ONS) open geography portal.	varchar	35
lad_code	The local authority district GSS code as defined in the Office for National Statistics (ONS) open geography portal.	varchar	9
multistage_plan	Indicates whether the local plan consists of multiple plans released over several stages until complete.	Boolean	

Field	Description	Type	Size
mhclg_planid	Unique ID provided by Ministry of Housing, Communities and Local Government for the local authority (extracted from MHCLG local plan spreadsheet).	varchar	36
mhclg_authority_name	The name of the authority used by the Ministry of Housing, Communities and Local Government in the local plan status spreadsheet.	text	
mhclg_code	The Office for National Statistics (ONS) GSS code for the boundary used by the Ministry of Housing, Communities & Local Government	text	
mhclg_start_year	Provides the year in which the formal process of developing the local plan begins (Extracted from the MHCLG local plan spreadsheet).	Int2	
mhclg_end_year	Provides the intended timeframe for the plan's application, although it may be reviewed or updated before the end date (Extracted from the MHCLG local plan spreadsheet).	Int2	
mhclg_adopted_date	Provides the date when the plan was formally adopted by the authority (Extracted from the MHCLG local plan spreadsheet).	Date	
capture_standard	A ranking from 1 to 5 indicating the data quality at time of capture.	int4	
Geom	Geometry of the feature in OSGB36 British National Grid (EPSG 27700) with no Z component.	Geometry.27700	

Vacant & Derelict Points/Sites – Scotland

Field	Description	Type	Size
name	The name or site reference number as given by the authority.	text	
type	The current land status (vacant/derelict)	text	
ownership	Provides the ownership of the land as recorded by the Authority (typically relates to whether it is public or private ownership).	text	
previous_use	Descriptor applied by a local authority to indicate a previous land use.	text	
permission_type	The planning permission status of the land.	text	
permission_date	When planning permission status was enforced	date	
unique_id	Unique ID key which provides a unique number across all data rows.	int8	
plan_id	Identifier unique to each local authority plan captured.	varchar	34
plan_name	Name of the local plan at time of capture.	varchar	114
plan_url	A URL link to the local plan at time of capture.	varchar	
lpa_name	The local planning authority name as defined in the Office for National Statistics (ONS) open geography portal.	varchar	35
lpa_code	The local planning authority GSS code as defined in the Office for National Statistics (ONS) open geography portal.	varchar	9
lad_name	The local authority district name as defined in the Office for National Statistics (ONS) open geography portal.	varchar	35
lad_code	The local authority district GSS code as defined in the Office for National Statistics (ONS) open geography portal.	varchar	9
multistage_plan	Indicates whether the local plan consists of multiple plans released over several stages until complete.	Boolean	
mhclg_planid	Unique ID provided by Ministry of Housing, Communities and Local Government for the local authority (extracted from MHCLG local plan spreadsheet).	varchar	36

Field	Description	Type	Size
mhclg_authority_name	The name of the authority used by the Ministry of Housing, Communities and Local Government in the local plan status spreadsheet.	text	
mhclg_code	The Office for National Statistics (ONS) GSS code for the boundary used by the Ministry of Housing, Communities & Local Government	text	
mhclg_start_year	Provides the year in which the formal process of developing the local plan begins (Extracted from the MHCLG local plan spreadsheet).	Int2	
mhclg_end_year	Provides the intended timeframe for the plan's application, although it may be reviewed or updated before the end date (Extracted from the MHCLG local plan spreadsheet).	Int2	
mhclg_adopted_date	Provides the date when the plan was formally adopted by the authority (Extracted from the MHCLG local plan spreadsheet).	date	
capture_standard	A ranking from 1 to 5 indicating the data quality at time of capture.	int4	
Geom	Geometry of the feature in OSGB36 British National Grid (EPSG 27700) with no Z component.	Geometry.27700	